

Model Name :GA-945PL-S3

SHEET

TITLE

01	COVER SHEET
02	BLOCK DIAGRAM
03	BOM & PCB MODIFY HISTORY
04	L775 A
05	L775 B,D
06	L775 C
07	L775 E,F,G,H
08	BROADWATER HOST
09	BROADWATER DDR
10	BROADWATER PCI EXP 16,DMI
11	BROADWATER VGA,MISC
12	BROADWATER GND
13	BROADWATER PWR
14	DDRII CHANNEL A-SHARE 1,2
15	DDRII CHANNEL B-SHARE 1,2
16	DDRII TERMINATION
17	PCI EXPRESS*16 SLOT
18	ICH7 DMI, PCI, USB
19	ICH7 IDE, GPIO, SATA, CTRL
20	ICH7 VCC, GND
21	ICS954148AF CLOCK.
22	ATX,ATX 12V CONNECT,BIOS
23	PCI EXPRESS*1 SLOT 1,2,3
24	PCI SLOT 1,2,3
25	HWM/ FAN CONTROL
26	IDE/FLOPPY
27	KB_PS2

SHEET

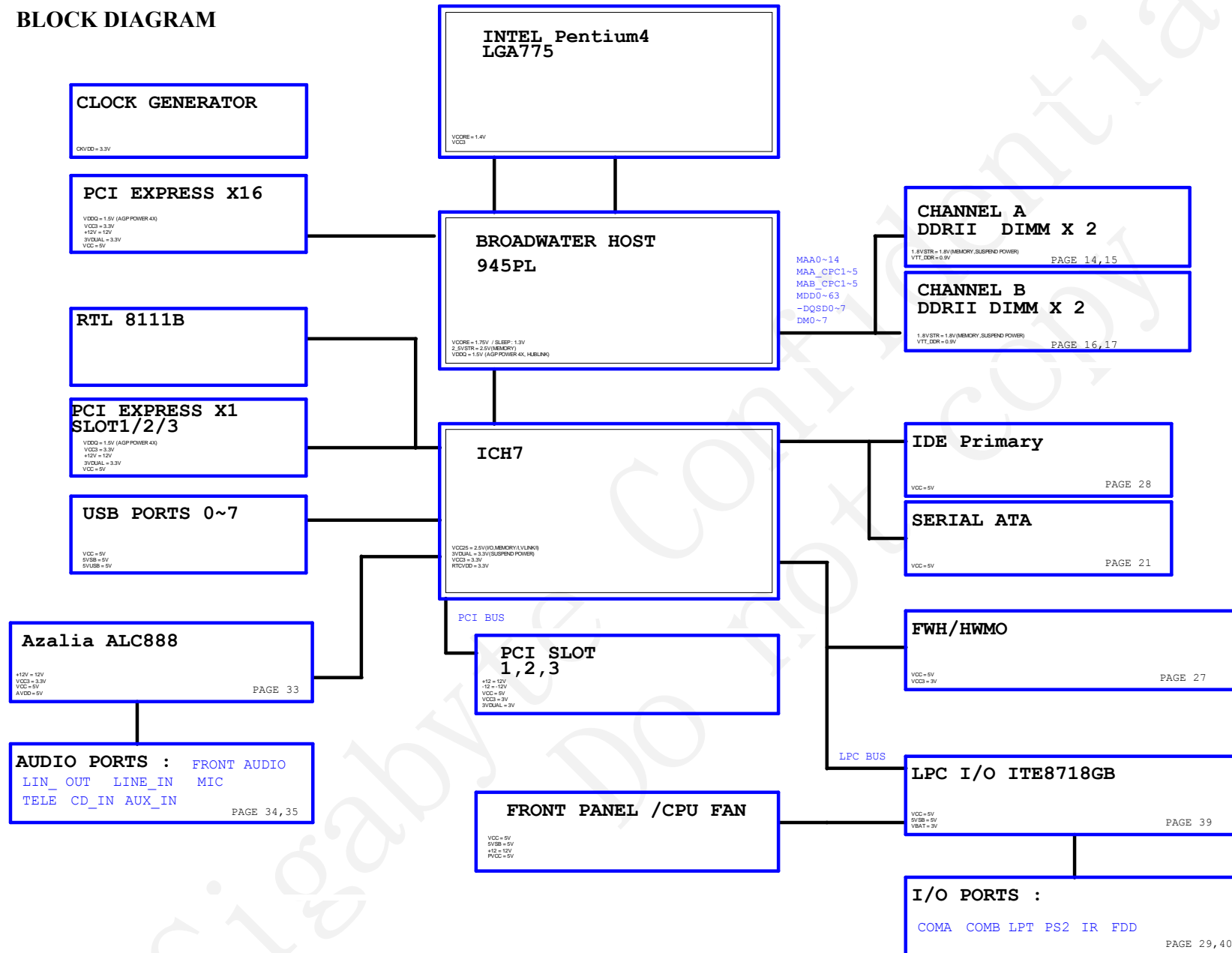
TITLE

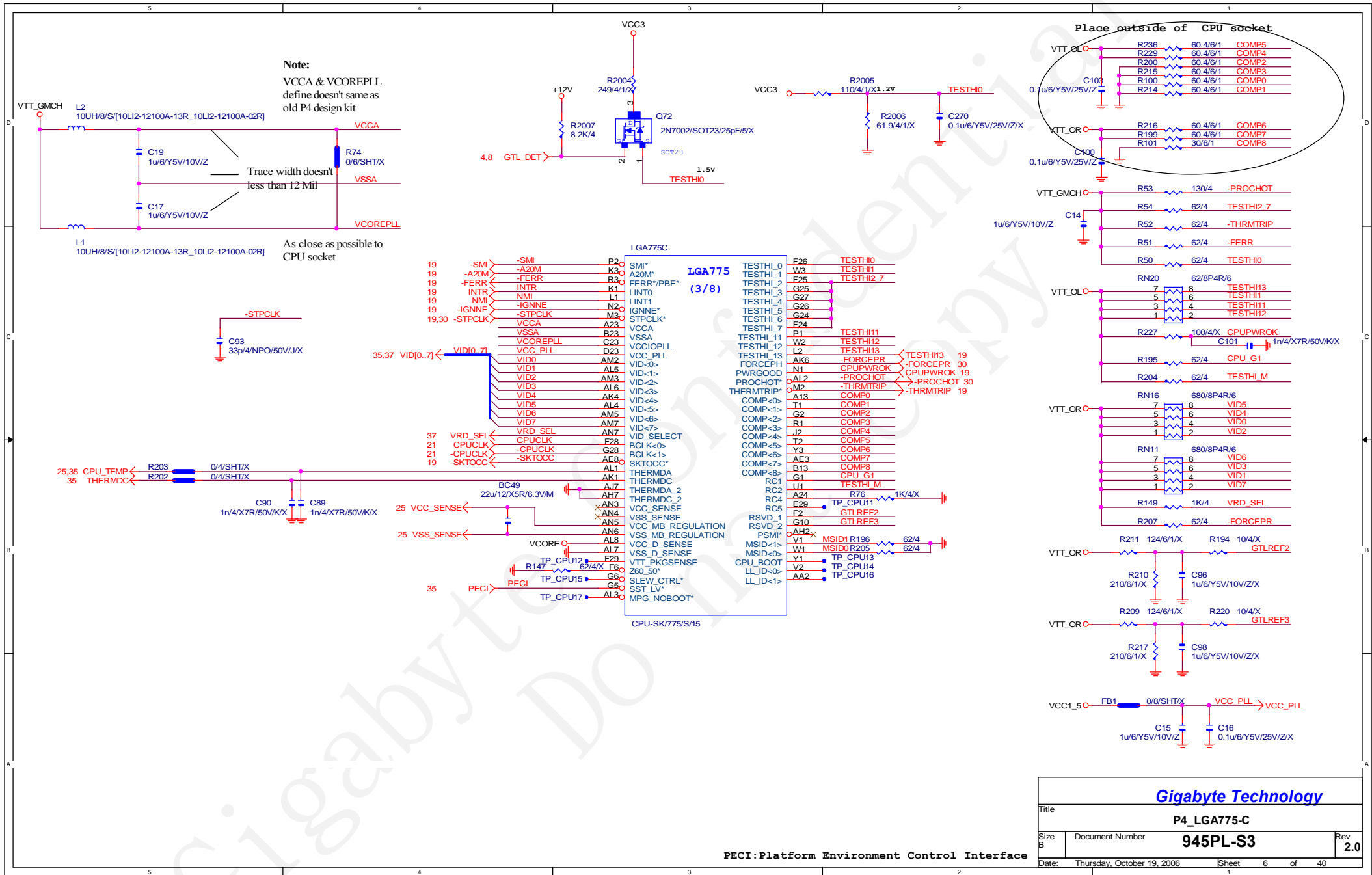
28	FRONT PANEL
29	FRONT USB,REAL USB CONNECT
30	PROCESSOR HOT
31	ALC888
32	REAR AUDIO JACK
33	FRONT AUDIO CONNECTOR
34	REALTEK RTL8111B
35	ITE 8718 GBKX
36	COM LPT
37	VCORE PWM
38	DISCRETE POWER
39	GPIO DEFINE
40	GPIO DEFINE
41	
42	
43	
44	

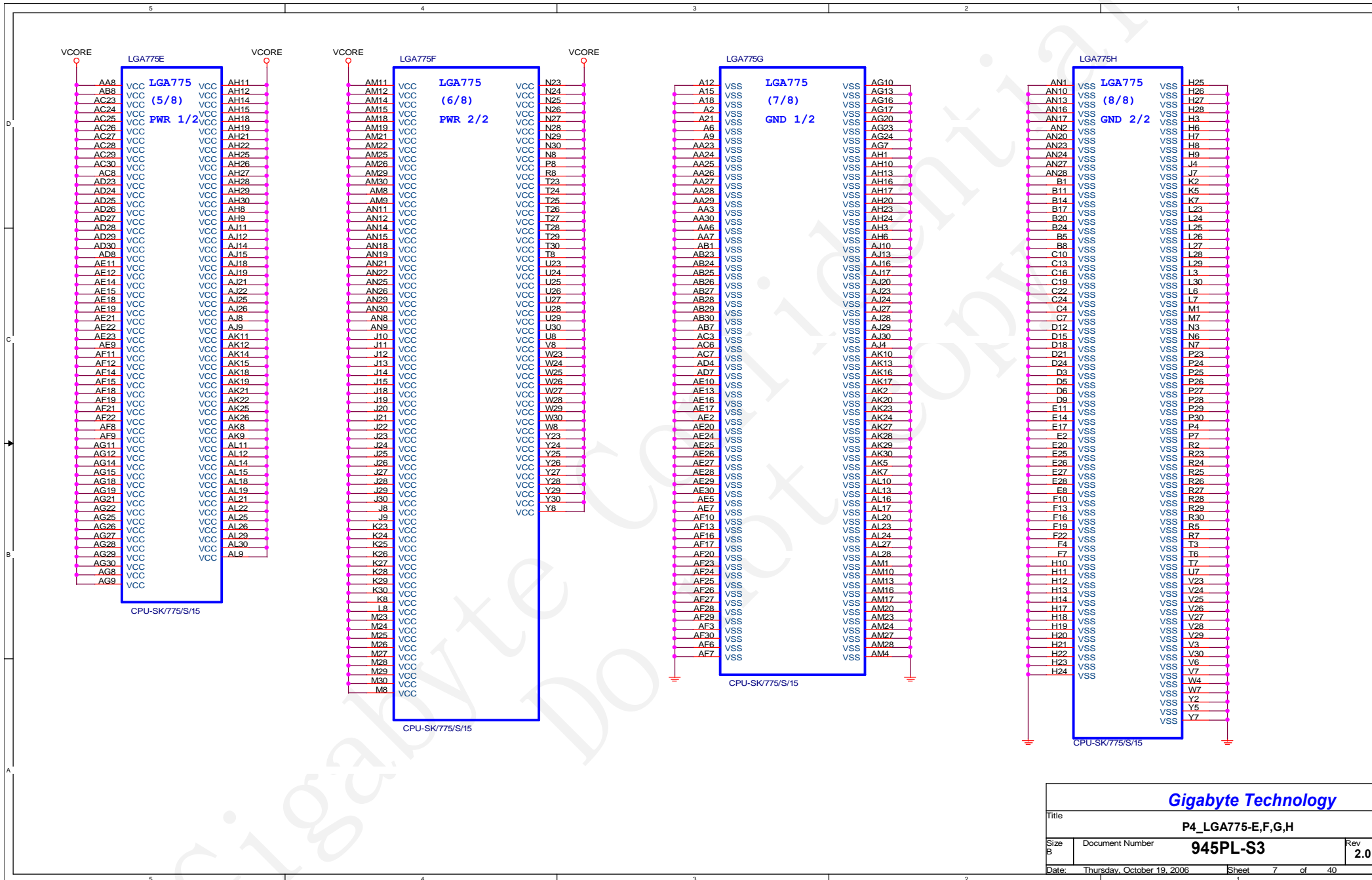
Intel Confidential

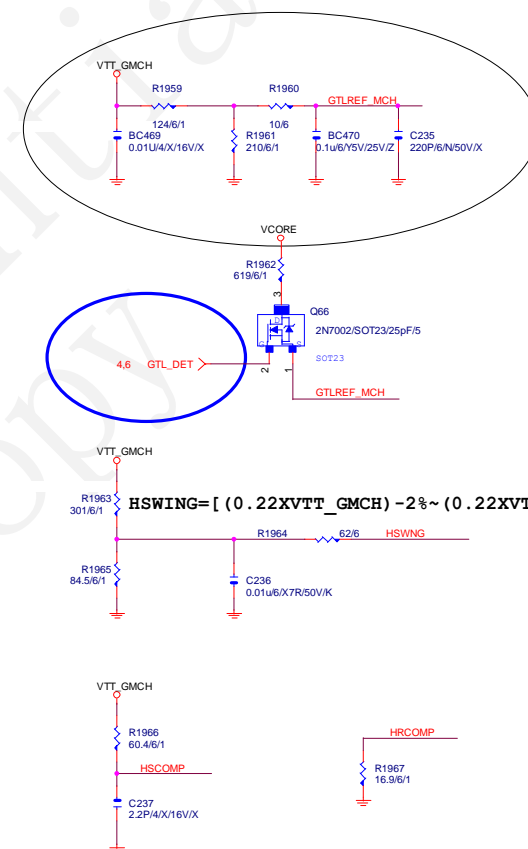
Title			Cover Sheet
Size	Document Number	945PL-S3	Rev
Custom			2.0
Date:	Thursday, October 19, 2006	Sheet	1 of 40

BLOCK DIAGRAM

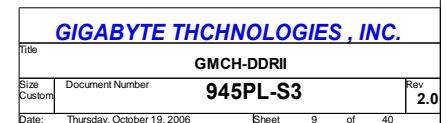


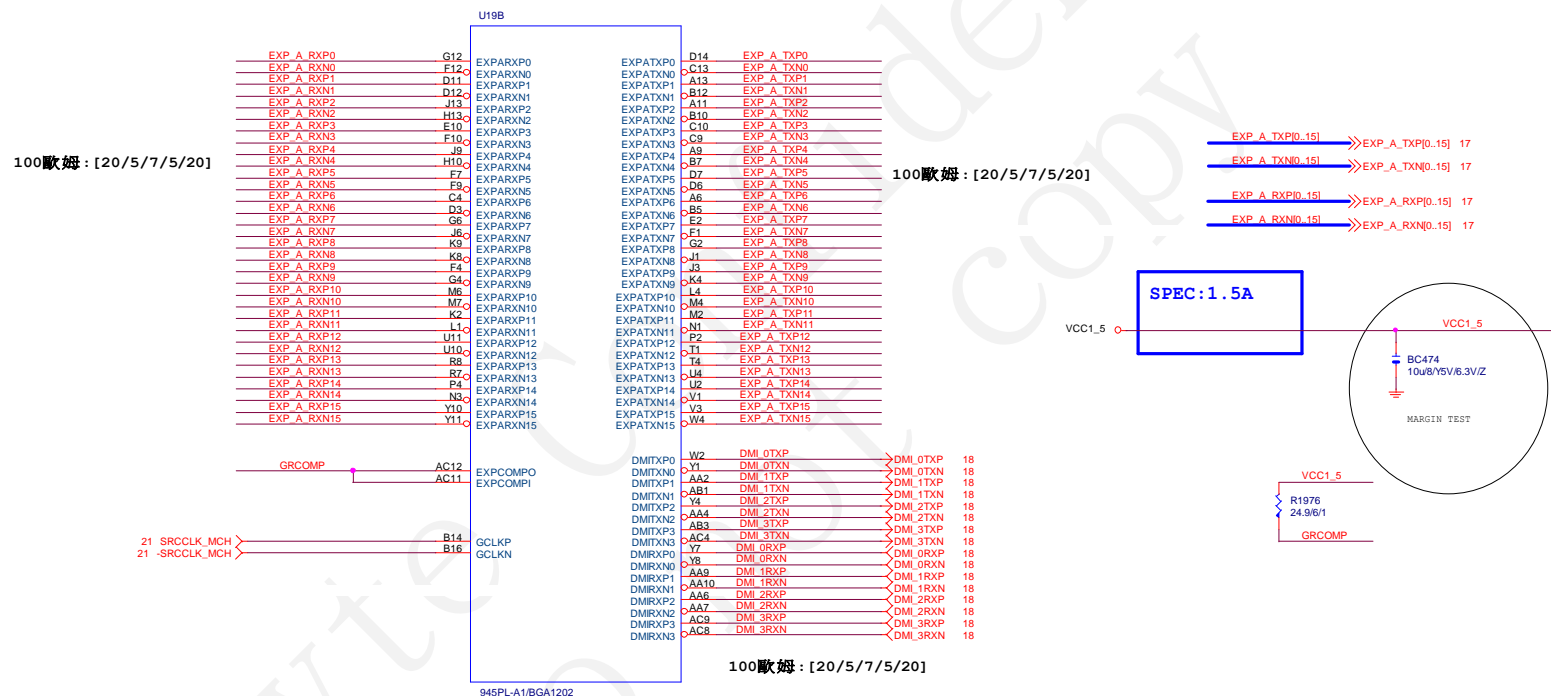






Title		GMCH-HOST	
Size	Document Number	Rev	
Custom	945PL-S3	2.0	
Date:	Thursday, October 19, 2006	Sheet	8 of 40





GIGABYTE THCNOLOGIES , INC.

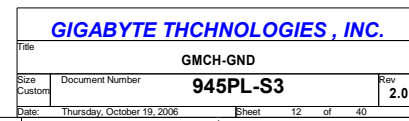
GMCH-PCI E & DMI


Size Custom Document Number 945PL-S3

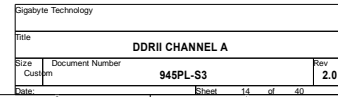
Rev 2.0

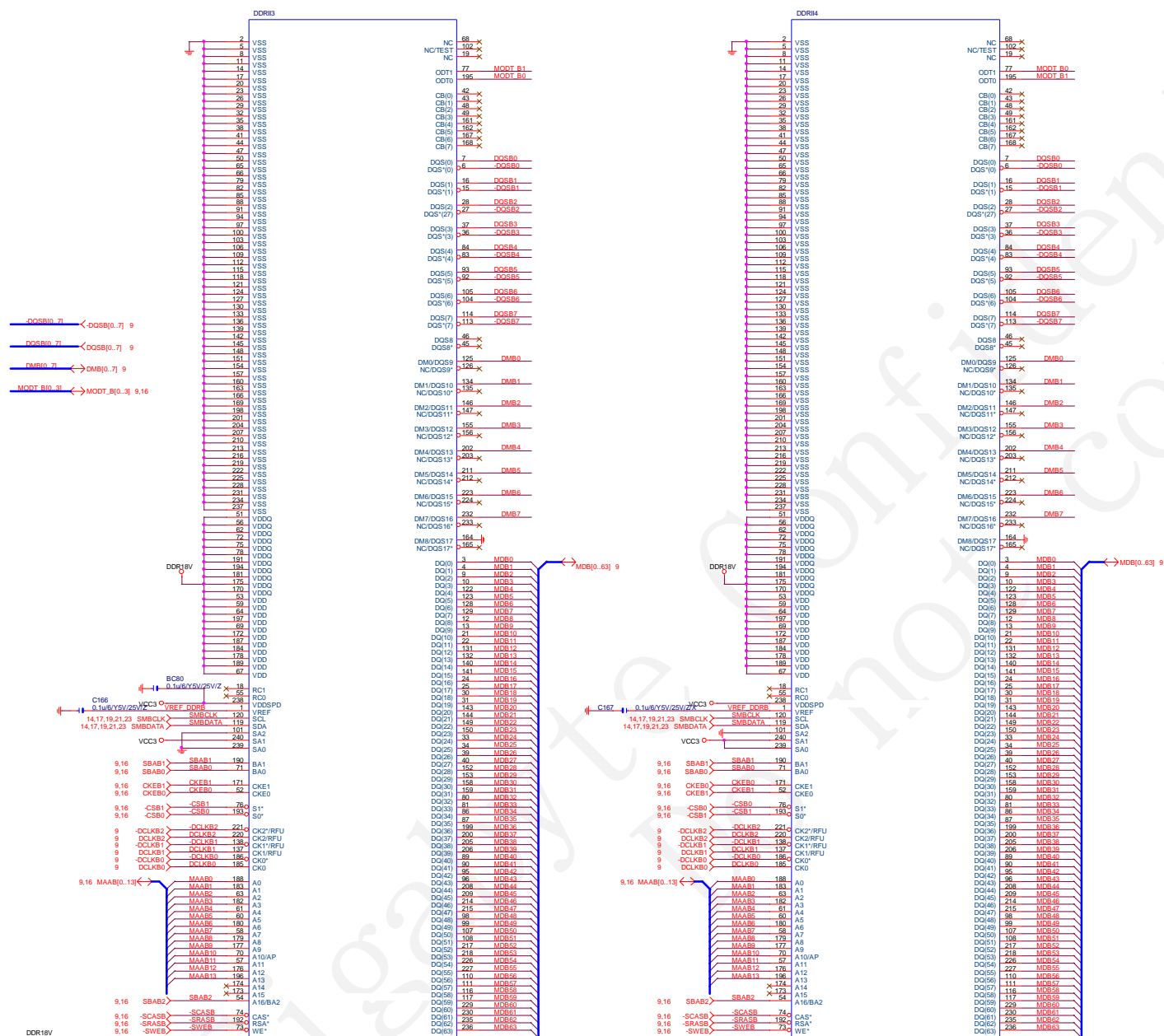
Date: Thursday, October 19, 2006 Sheet 10 of 40



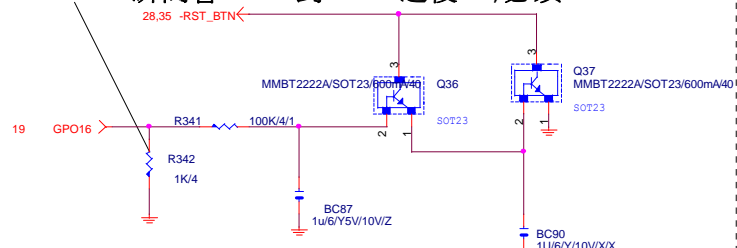


<div style="text-align: center;">  </div>			
Title			
GMCH-PWR			
Size Custom	Document Number 945PL-S3		Rev 2.0
Date:	Thursday, October 19, 2006	Sheet	13 of 40

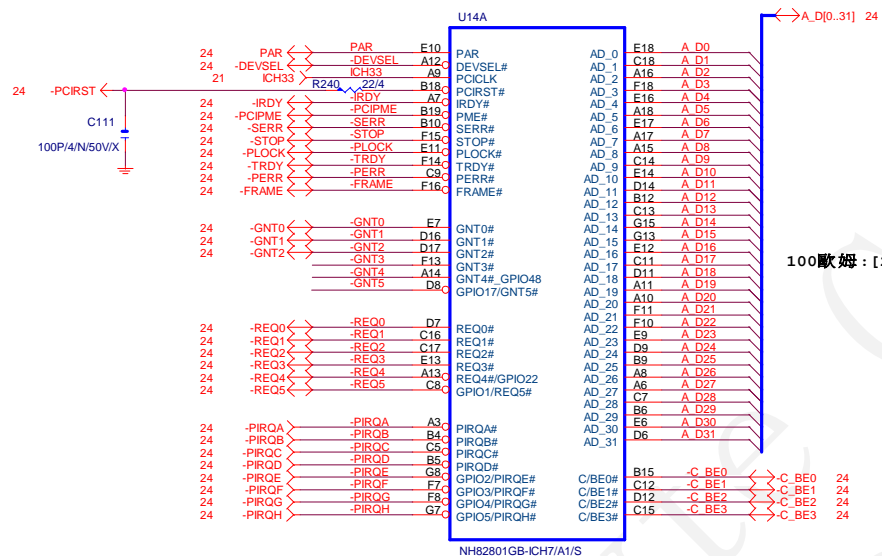




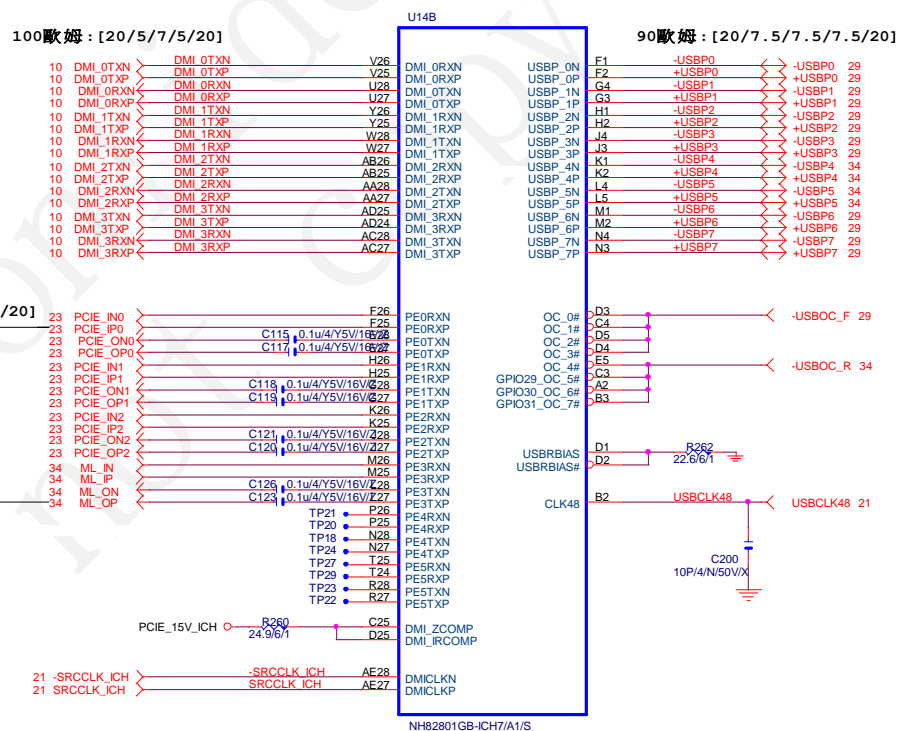
FOR ICH7R POWER ON 瞬間會HIGH 到1.8V 之後0V,必須PULL DOWN 1K/6



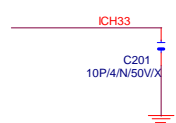
H/W
RESET



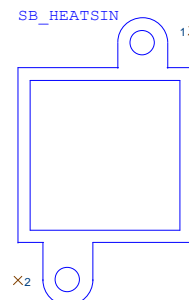
100歐姆:[20/5/7/5/20]



10HB1-032801-M1 REV:NON



	GNT4#	GNT5#
SPI=	1	0
PCI=	0	1
LPC=	1	1

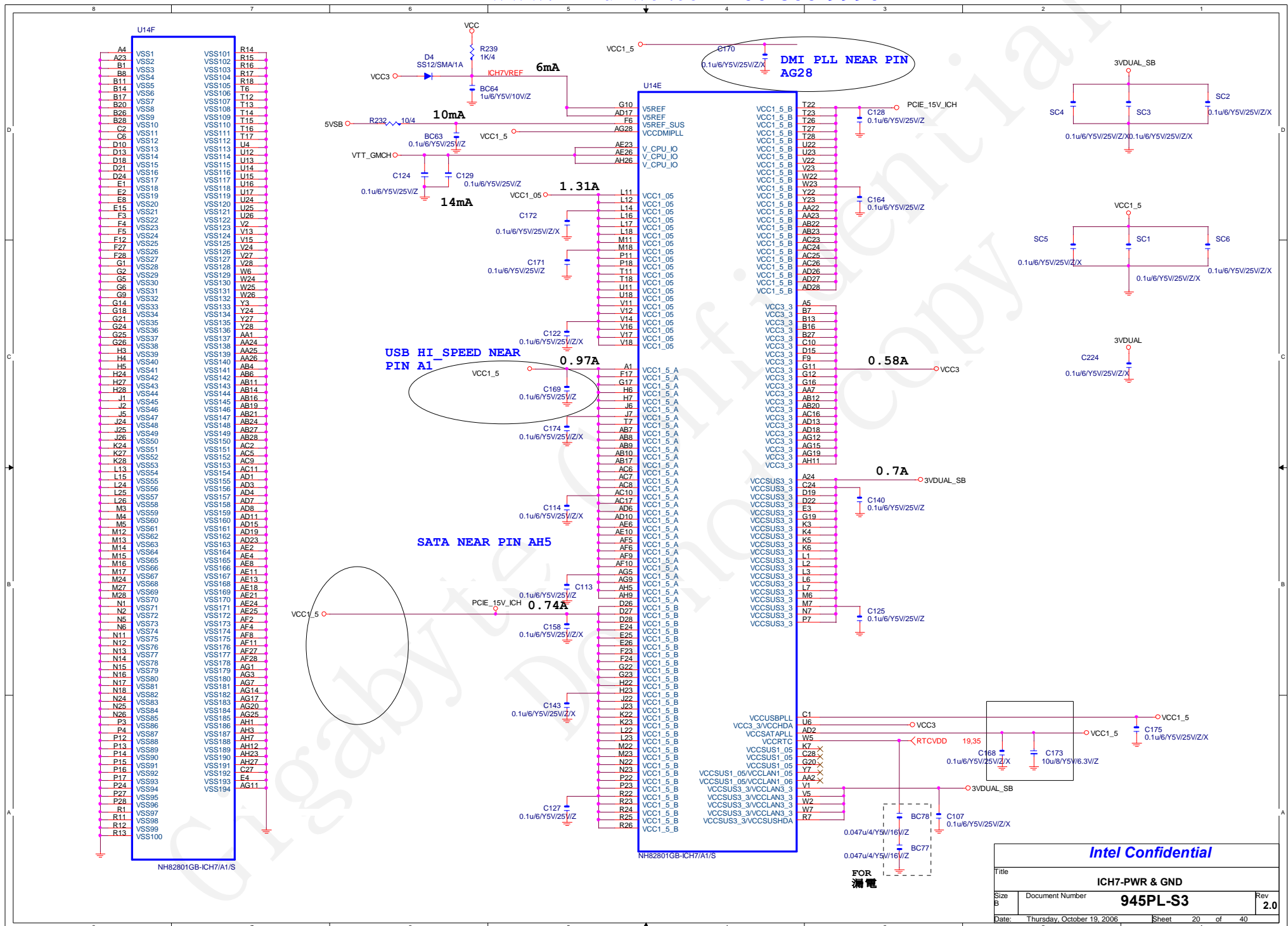


SB_HEATSIN/12SP2-030010-81R_12SP2-030010-82R_12SP2-030010-83R_12SP2-030010-84R

Intel Confidential

Title			
ICH7-PCI, DMI, LAN, USB			
Size B	Document Number	945PL-S3	Rev 2.
Date:	Thursday, October 19, 2006	Sheet	18 of 40

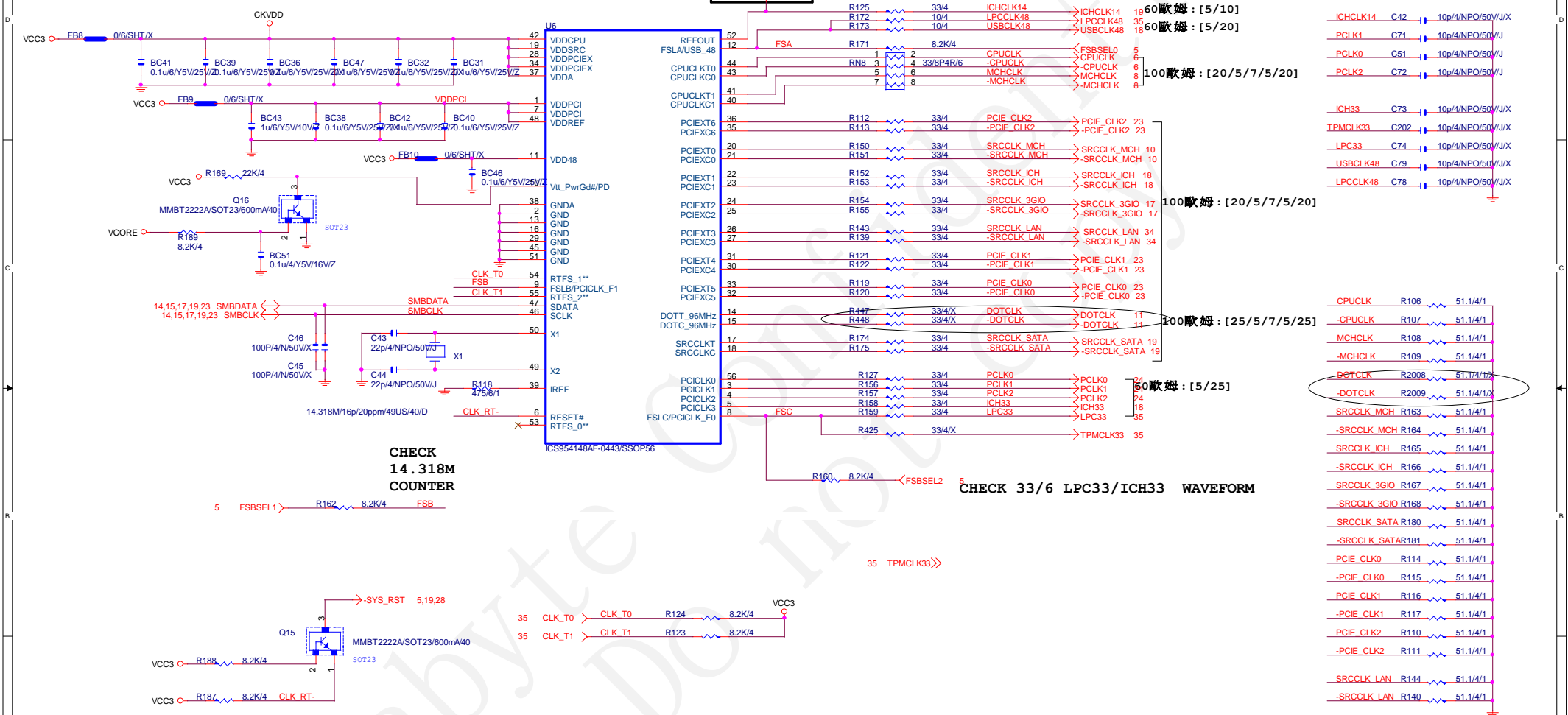




100MHZ

8.2K/4

R126

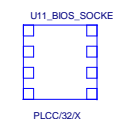
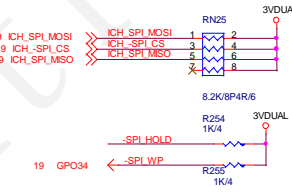
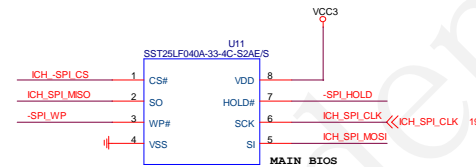
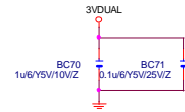
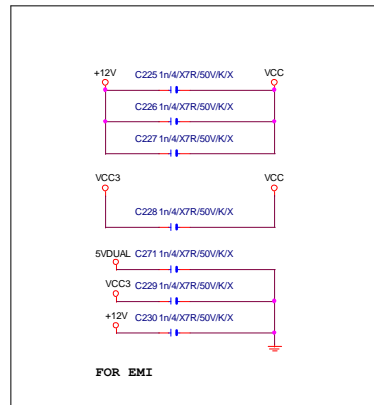
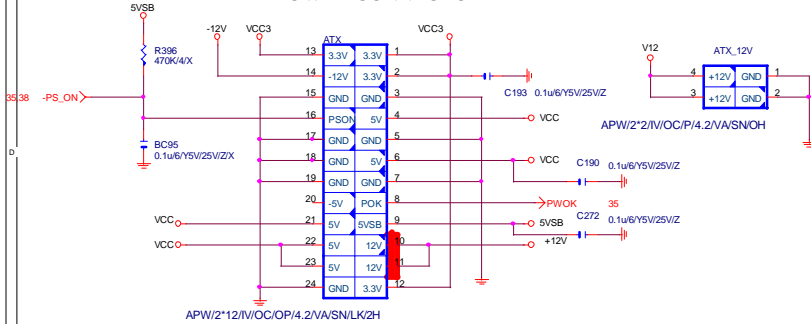


CHECK 33/6 LPC33/ICH33 WAVEFORM

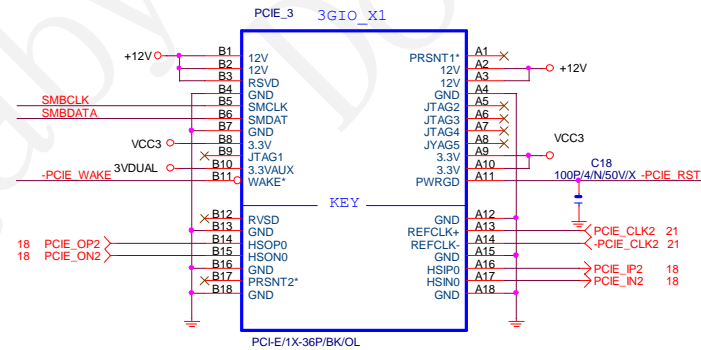
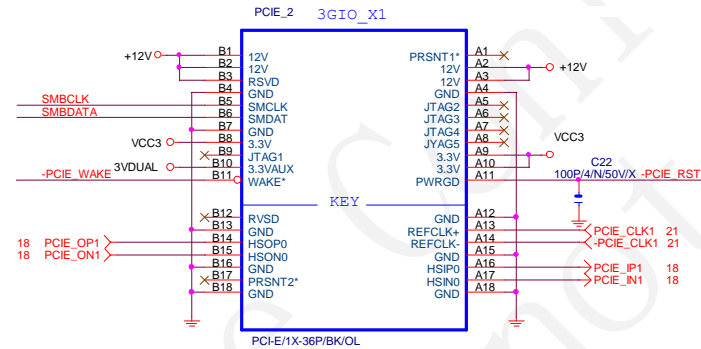
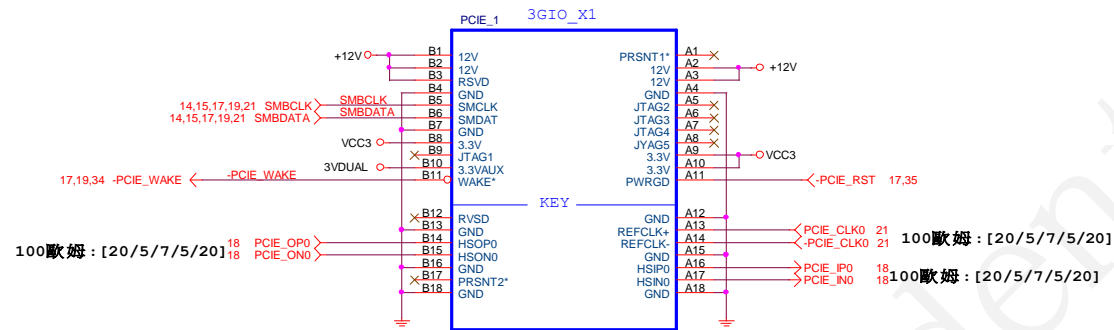
35 TPMCLK33>>

Title			
ICS954148AF CLK GEN			
Size Custom	Document Number 945PL-S3		Rev 2.0
Date:	Thursday, October 19, 2006	Sheet 21 of 40	

ATX POWER CONNECTOR

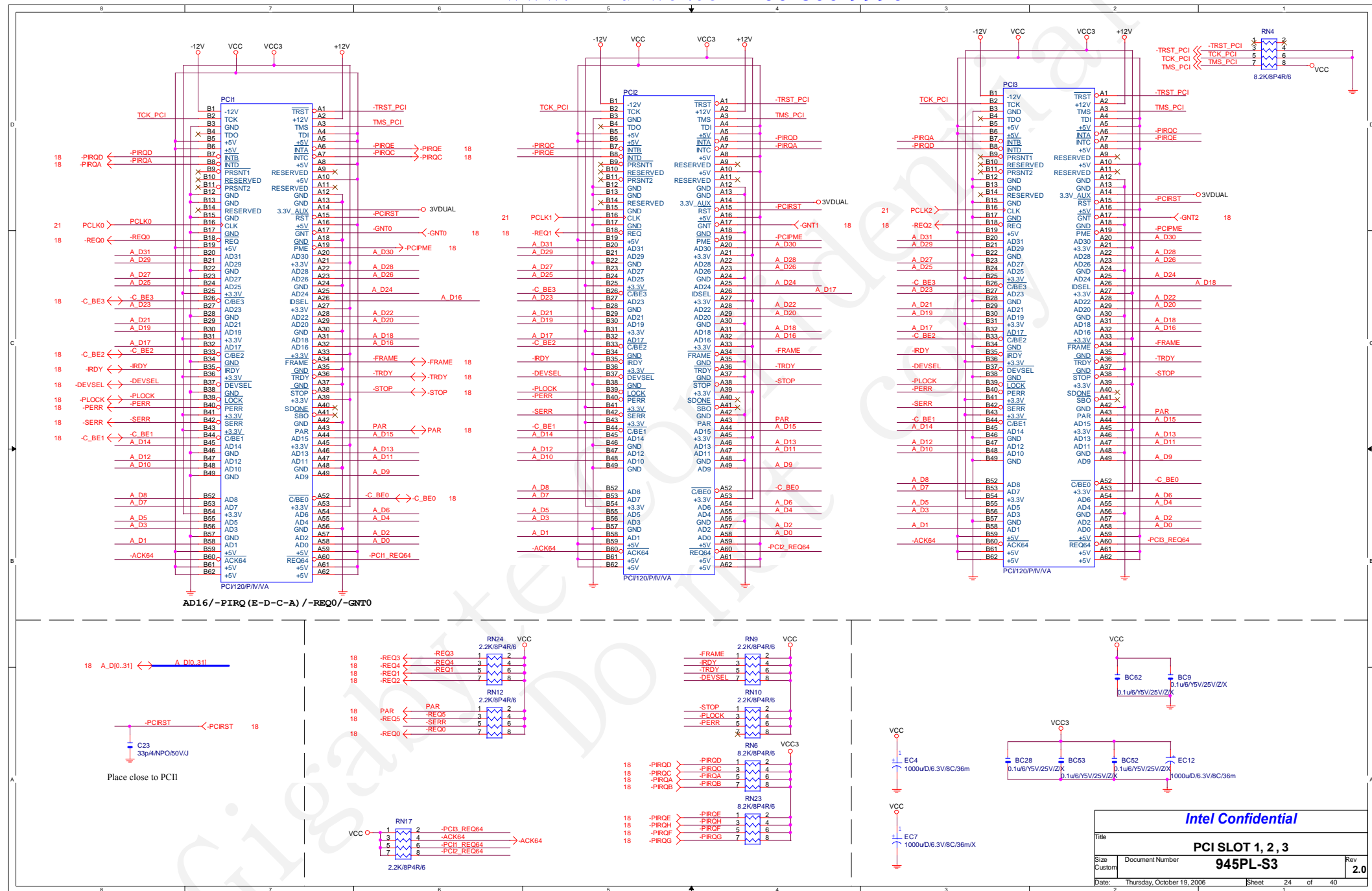


GIGABYTE			
Title			
ATX POWER CONNECTOR, BIOS			
Size	Document Number	945PL-S3	Rev
Custom			2.0
Date:	Thursday, October 19, 2006	Sheet	22 of 40

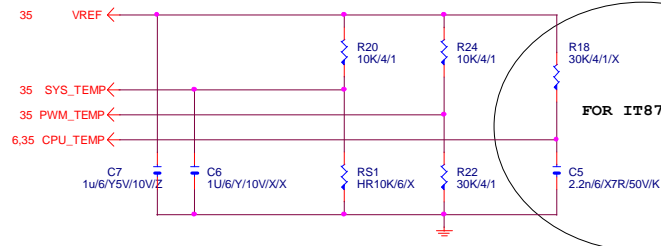


Intel Confidential

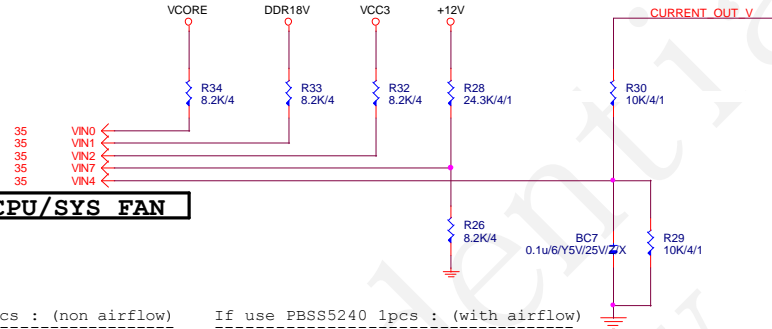
Title			PCI E SLOT 1, 2, 3
Size	Document Number	945PL-S3	
B		Rev	2.0
Date:	Thursday, October 19, 2006	Sheet	23 of 40



TEMP. SENSE



VOLTAGE SENSE



CPU/SYS FAN

DUAL POWER

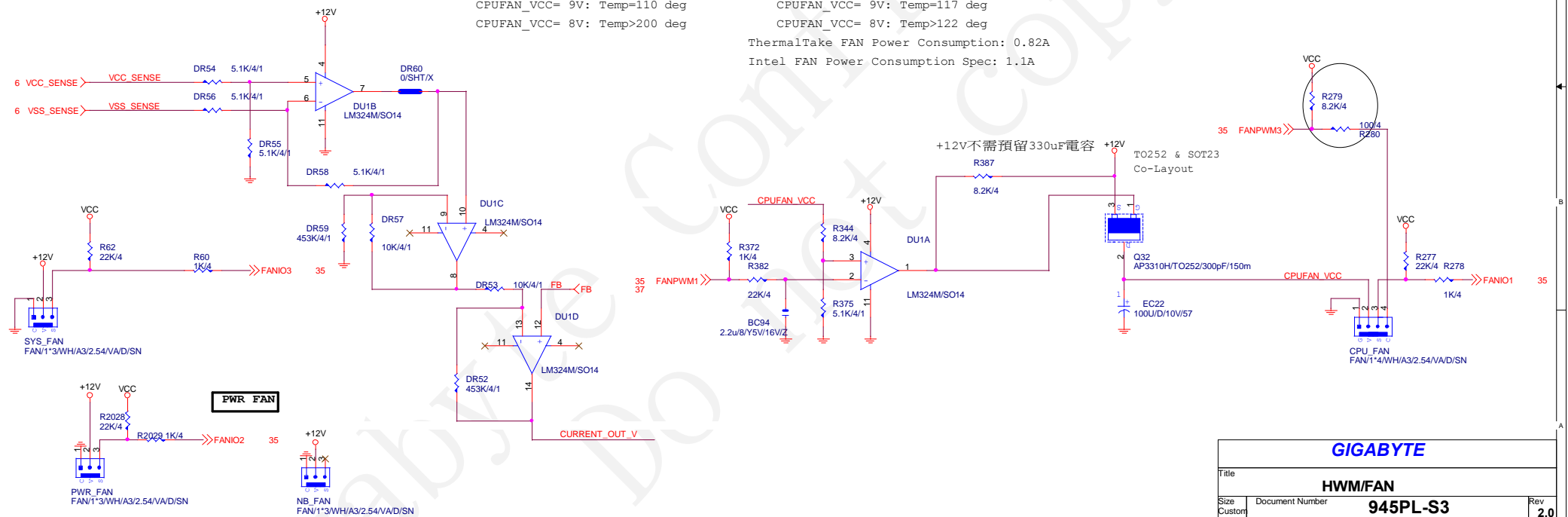
If use PBSS5240 1pcs : (non airflow)

CPUFAN_VCC=12V: Temp=40 deg
 CPUFAN_VCC=11V: Temp=82 deg
 CPUFAN_VCC=10V: Temp=70 deg
 CPUFAN_VCC= 9V: Temp=110 deg
 CPUFAN_VCC= 8V: Temp>200 deg

If use PBSS5240 1pcs : (with airflow)

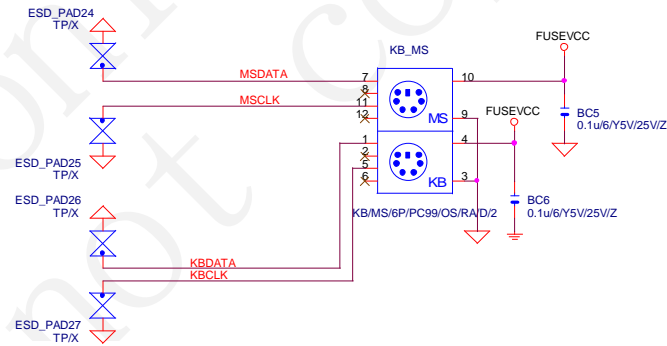
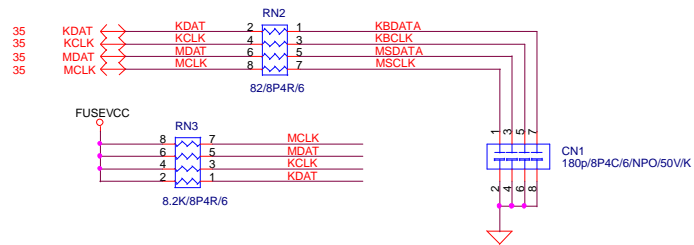
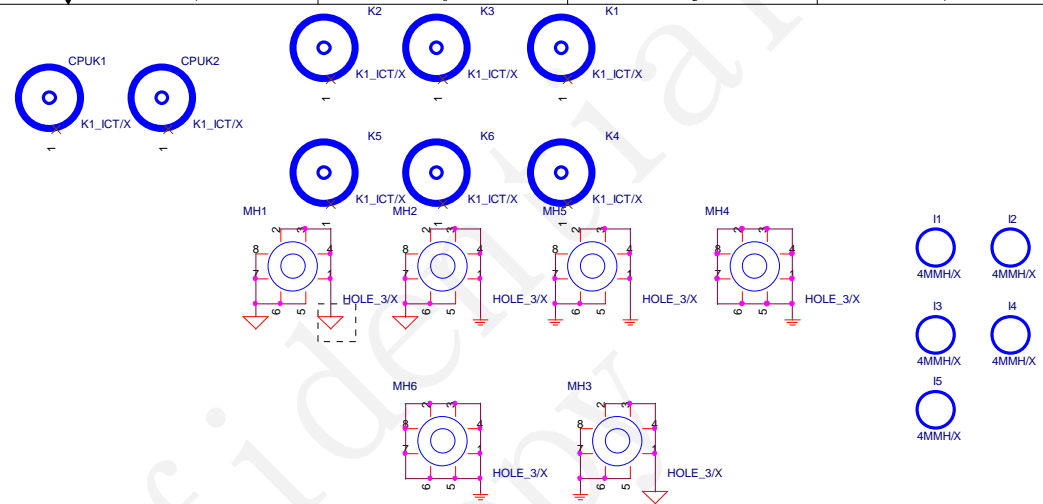
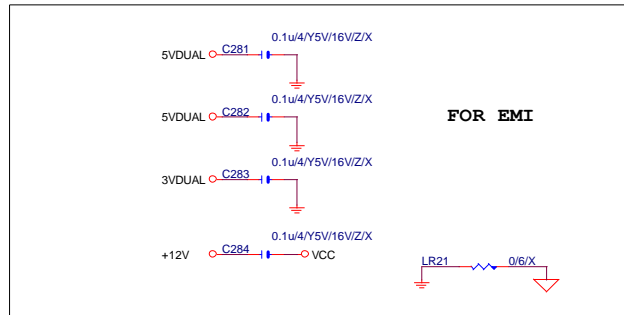
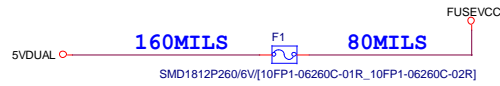
CPUFAN_VCC=12V: Temp=33 deg
 CPUFAN_VCC=11V: Temp=62 deg
 CPUFAN_VCC=10V: Temp=86 deg
 CPUFAN_VCC= 9V: Temp=117 deg
 CPUFAN_VCC= 8V: Temp>122 deg

ThermalTake FAN Power Consumption: 0.82A
 Intel FAN Power Consumption Spec: 1.1A



GIGABYTE

Title			
HWM/FAN			
Size	Document Number	945PL-S3	Rev
Custom			2.0
Date:	Thursday, October 19, 2006	Sheet	25 of 40

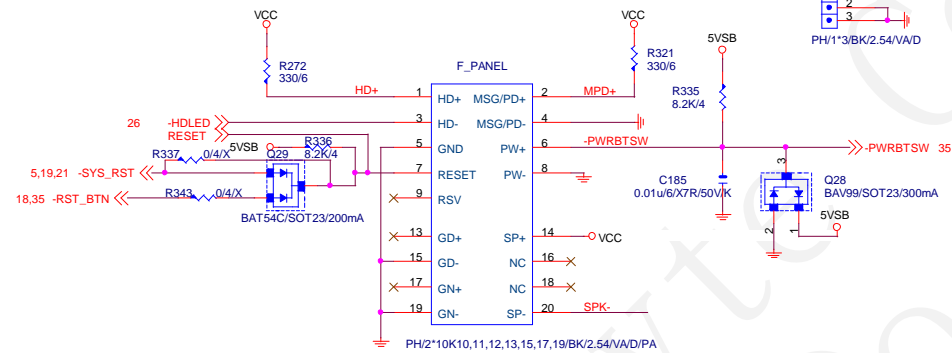


GIGABYTE CORP.			
Title KB & PS2 MOUSE			
Size B	Document Number 945PL-S3		Rev 2.0
Date:	Sheet 27 of 40		

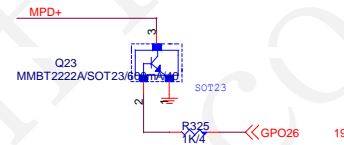
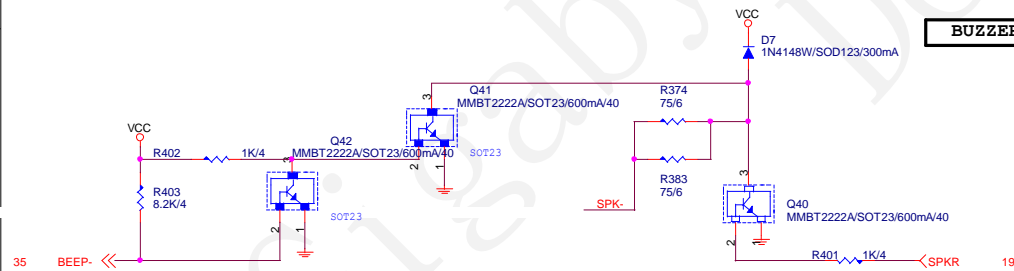
INTEL FRONT PANEL

3 PIN POWER LED
LAYOUT PLACE CLOSE
TO F_PANEL

PWR_LED
1 MPD+
2 MPD-
3 PH/1*3/BK/2.54/V/D



BUZZER

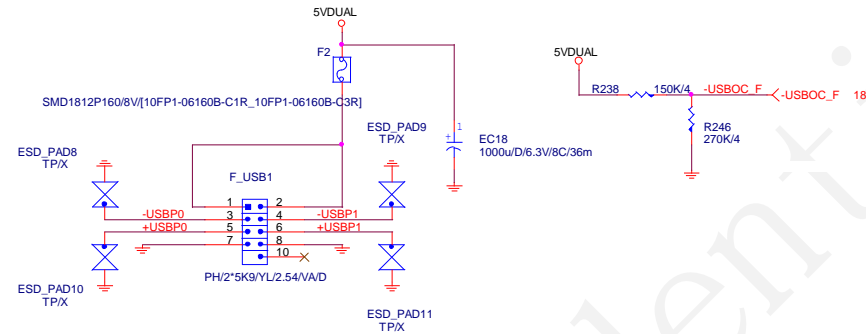


Intel Confidential

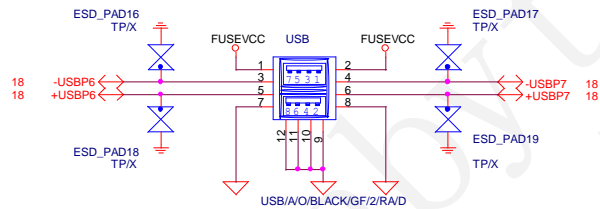
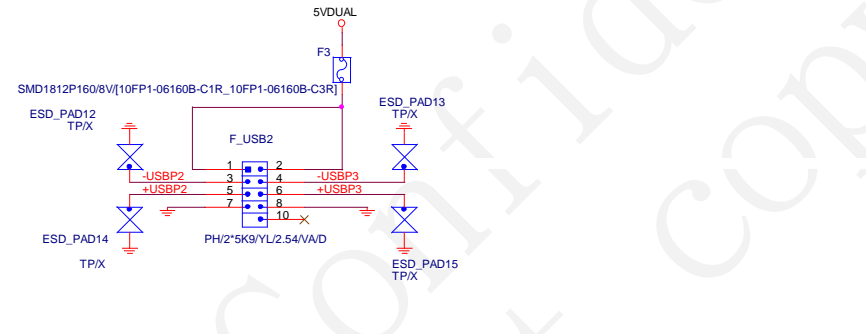
Title		
FRONT PANEL		
Size	Document Number	Rev
Custom	945PL-S3	2.0
Date:	Thursday, October 19, 2006	Sheet 28 of 40

FRONT USB

90欧姆 : [20/7.5/7.5/7.5/20]



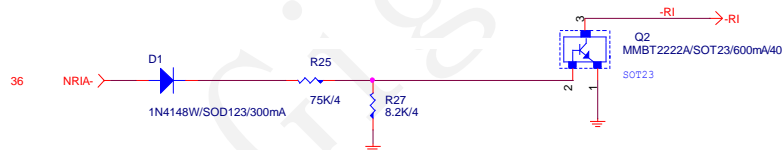
90欧姆 : [20/7.5/7.5/7.5/20]



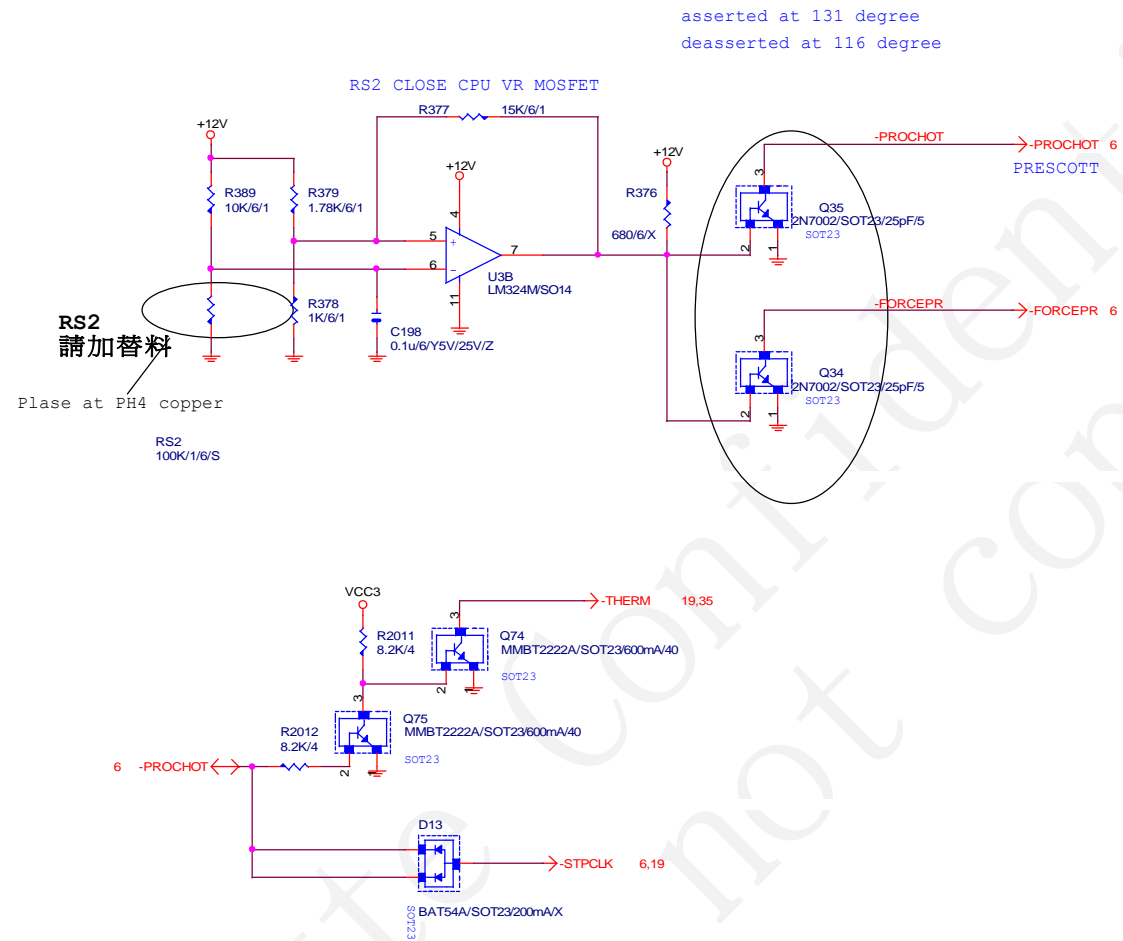
90欧姆 : [20/7.5/7.5/7.5/20]

FOR 882 EMI
靠近USB

靠近FRONT USB

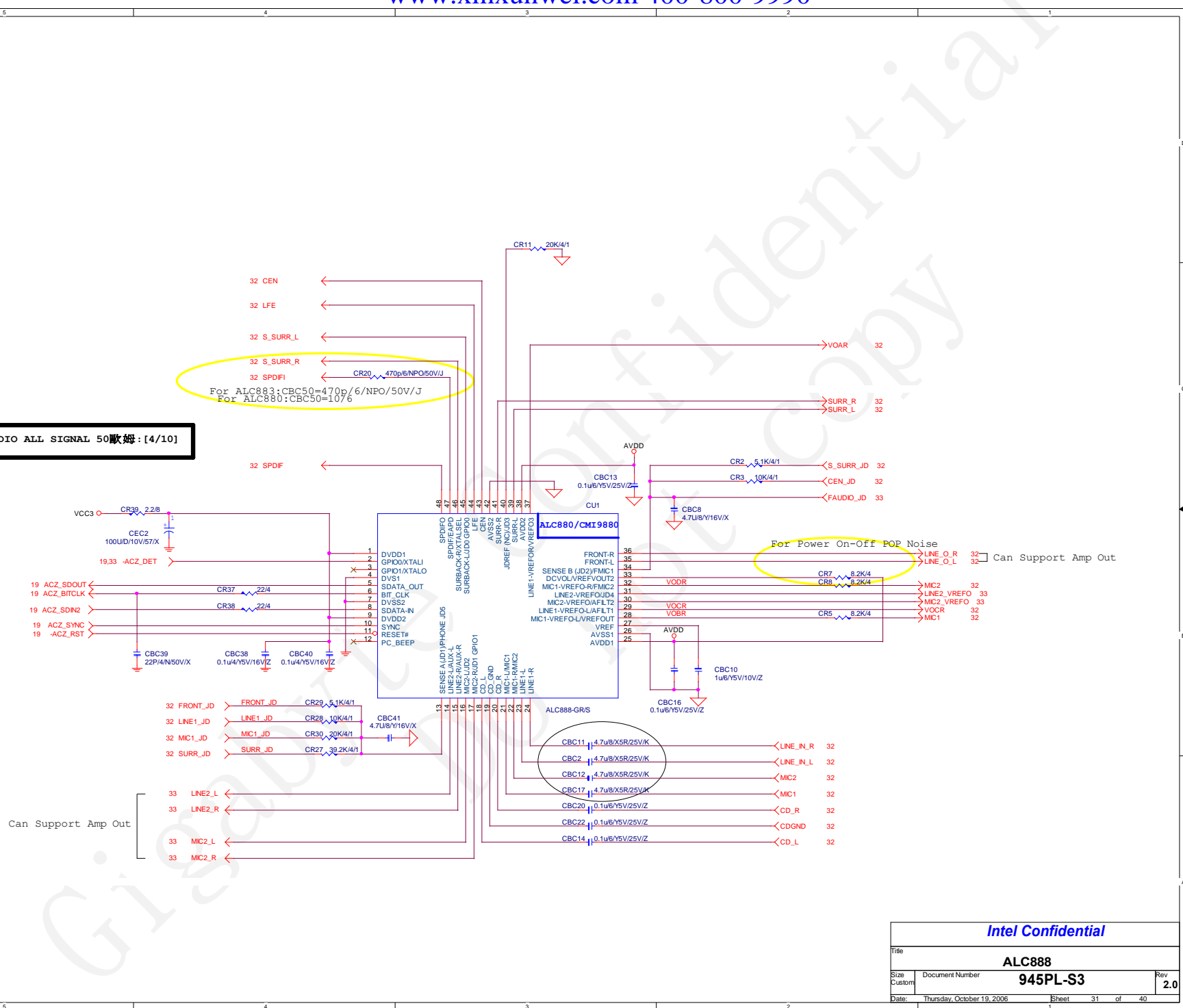


Intel Confidential			
Title			
FRONT USB CONNECTOR			
Size	Document Number	Rev	
B	945PL-S3	2.0	
Date:	Thursday, October 19, 2006	Sheet	29 of 40



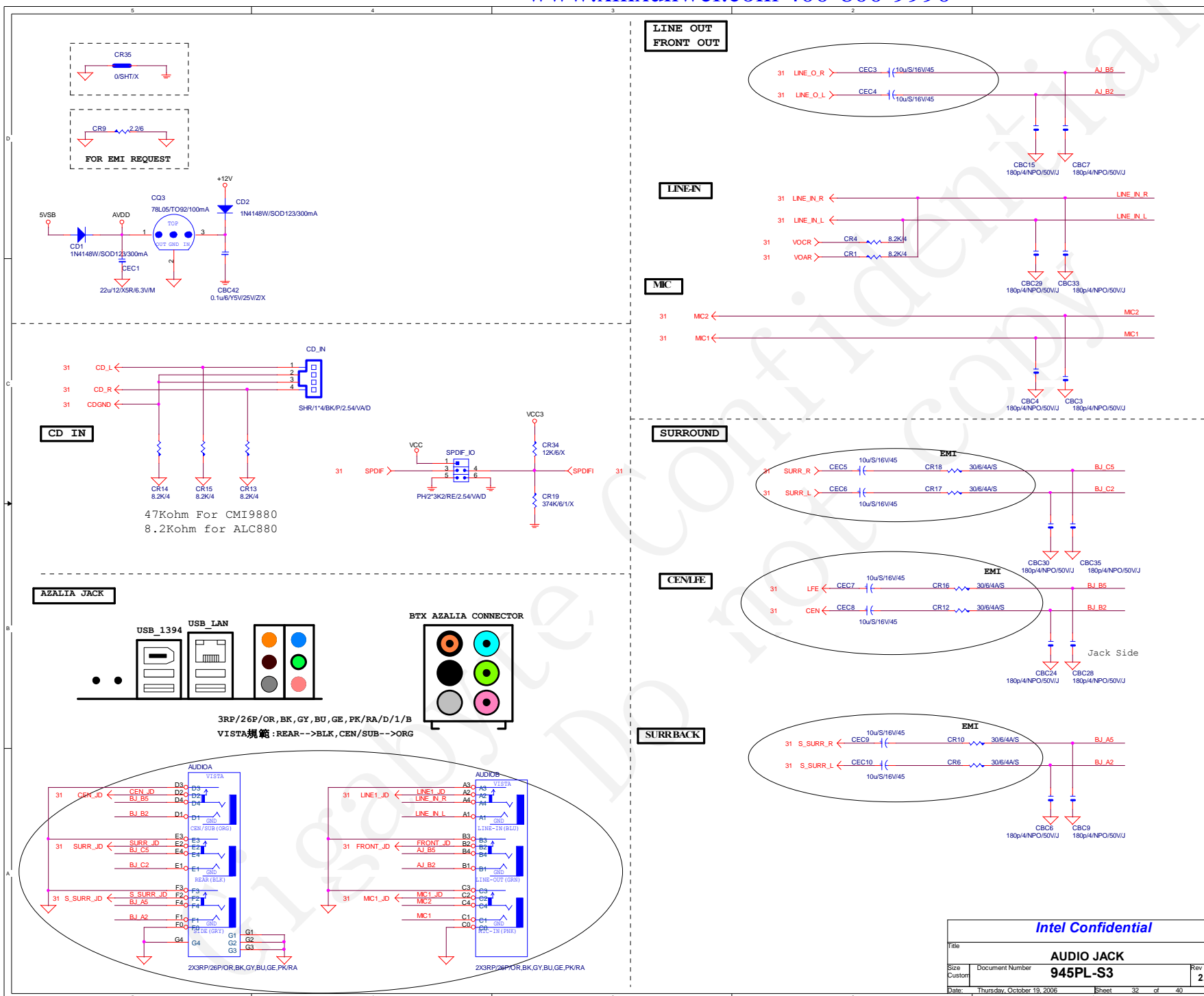
Intel Confidential

Title		
FAN CONTROL		
Size B	Document Number	Rev
	945PL-S3	2.0
Date:	Thursday, October 19, 2006	Sheet 30 of 40



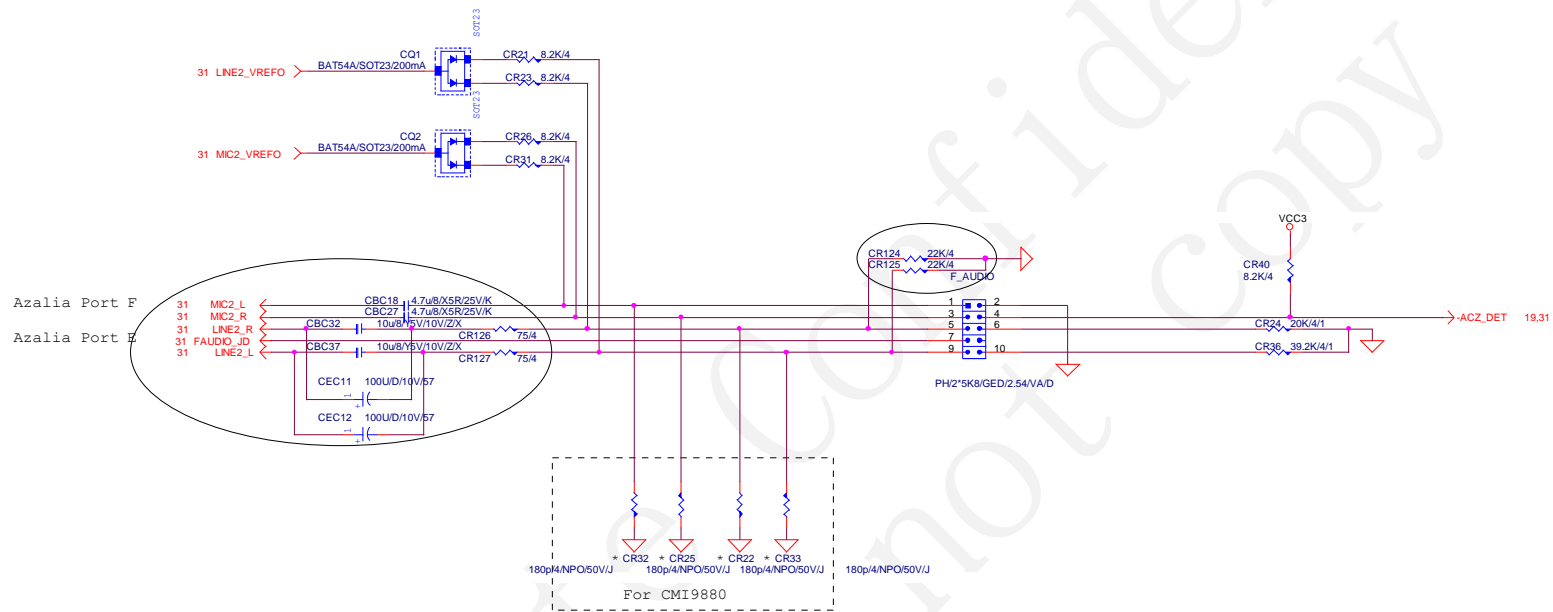
Intel Confidential

Title			ALC888
Size	Document Number	945PL-S3	
Custom			Rev 2.0
Date:	Thursday, October 19, 2006	Sheet	31 of 40

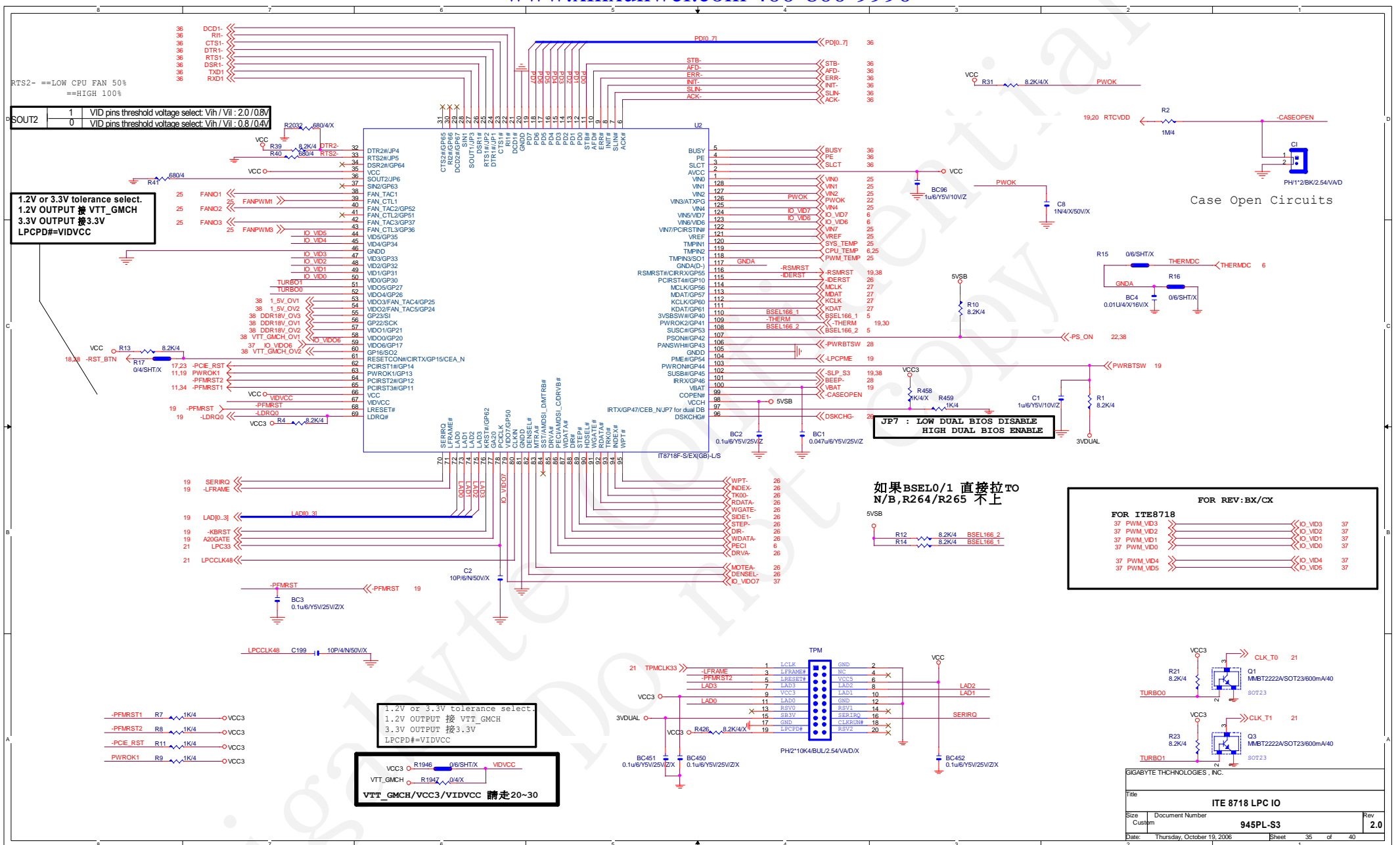


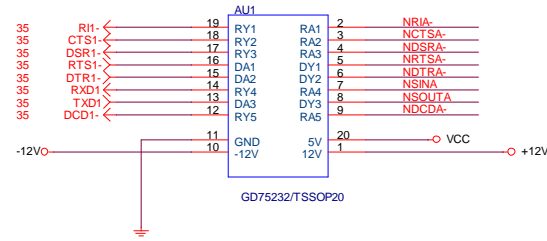
Intel Confidential

Title		
AUDIO JACK		
945PL-S3		
Size	Document Number	Rev
Custom		2.0
Date:	Thursday, October 19, 2006	Sheet 32 of 40

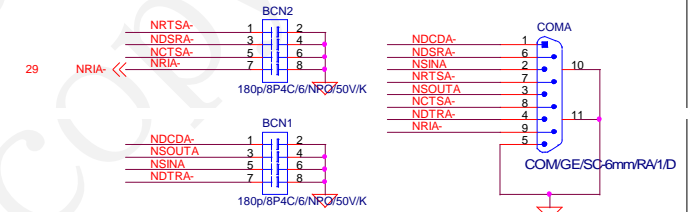


Intel Confidential			
Title			
FRONT AUDIO CONNECTOR			
Size	Document Number	945PL-S3	Rev
Custom			2.0
Date:	Thursday, October 19, 2006	Sheet	33 of 40

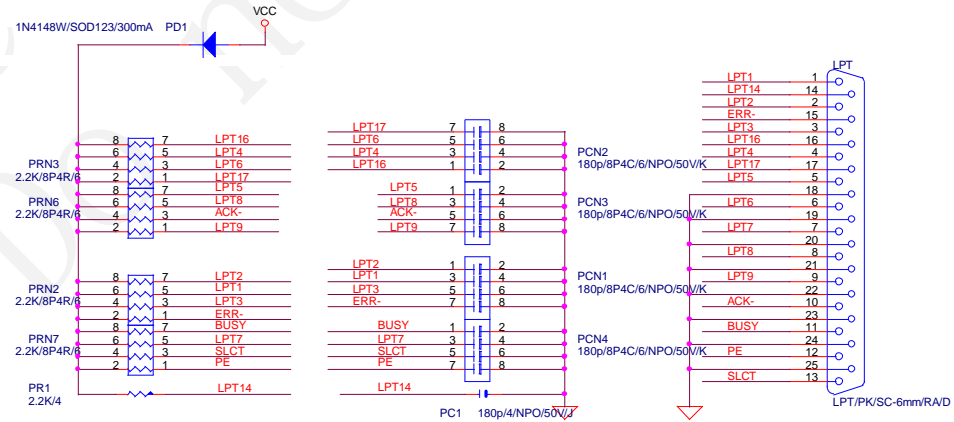
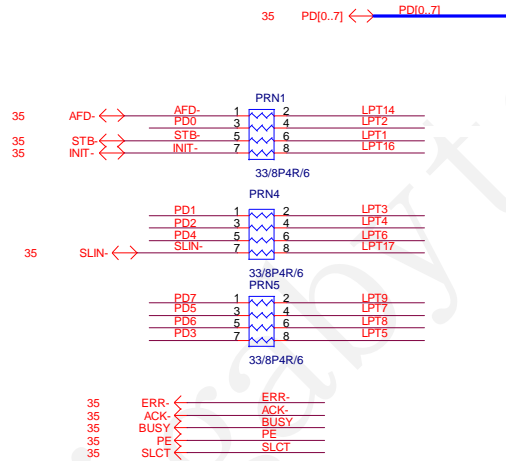




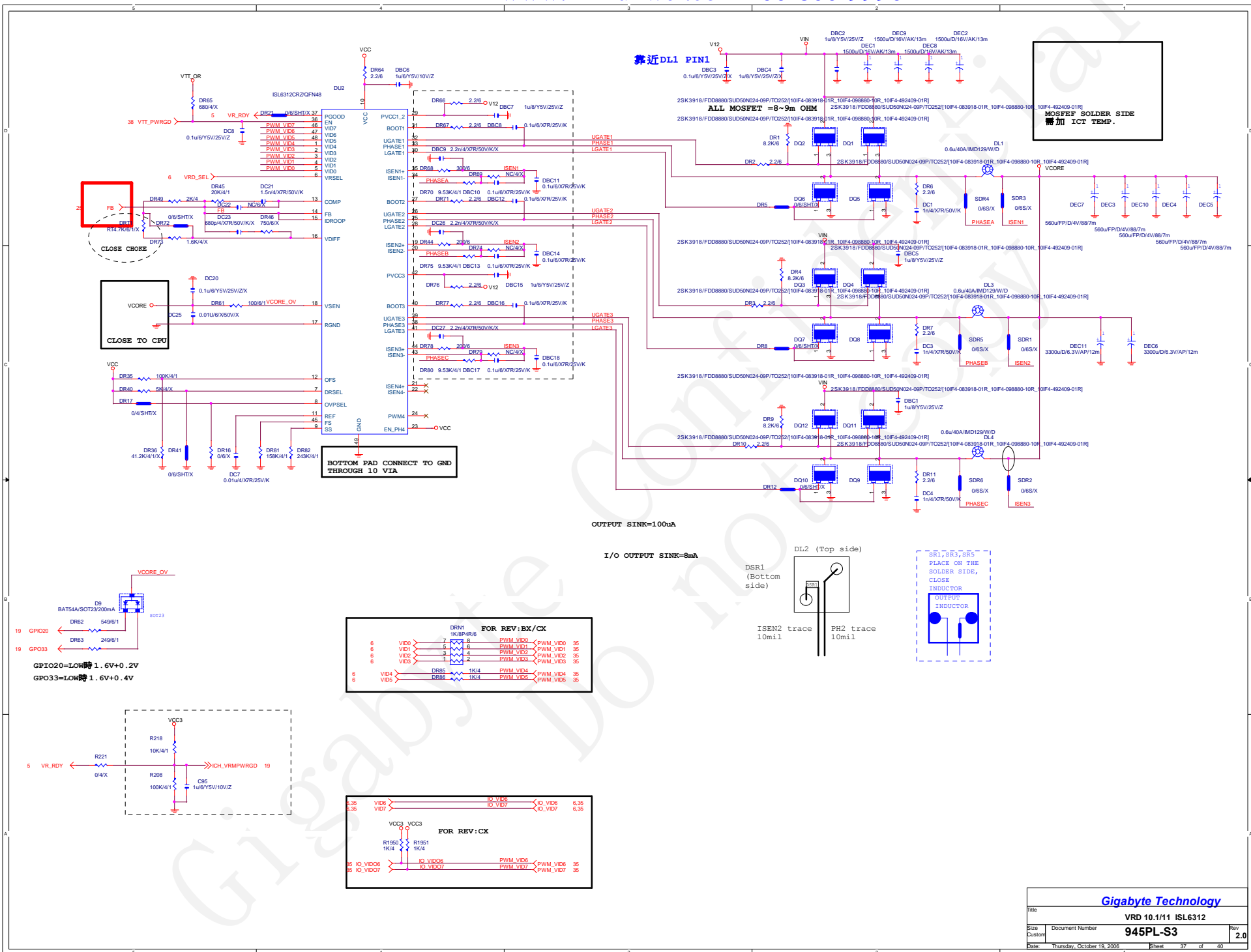
FOR EMI

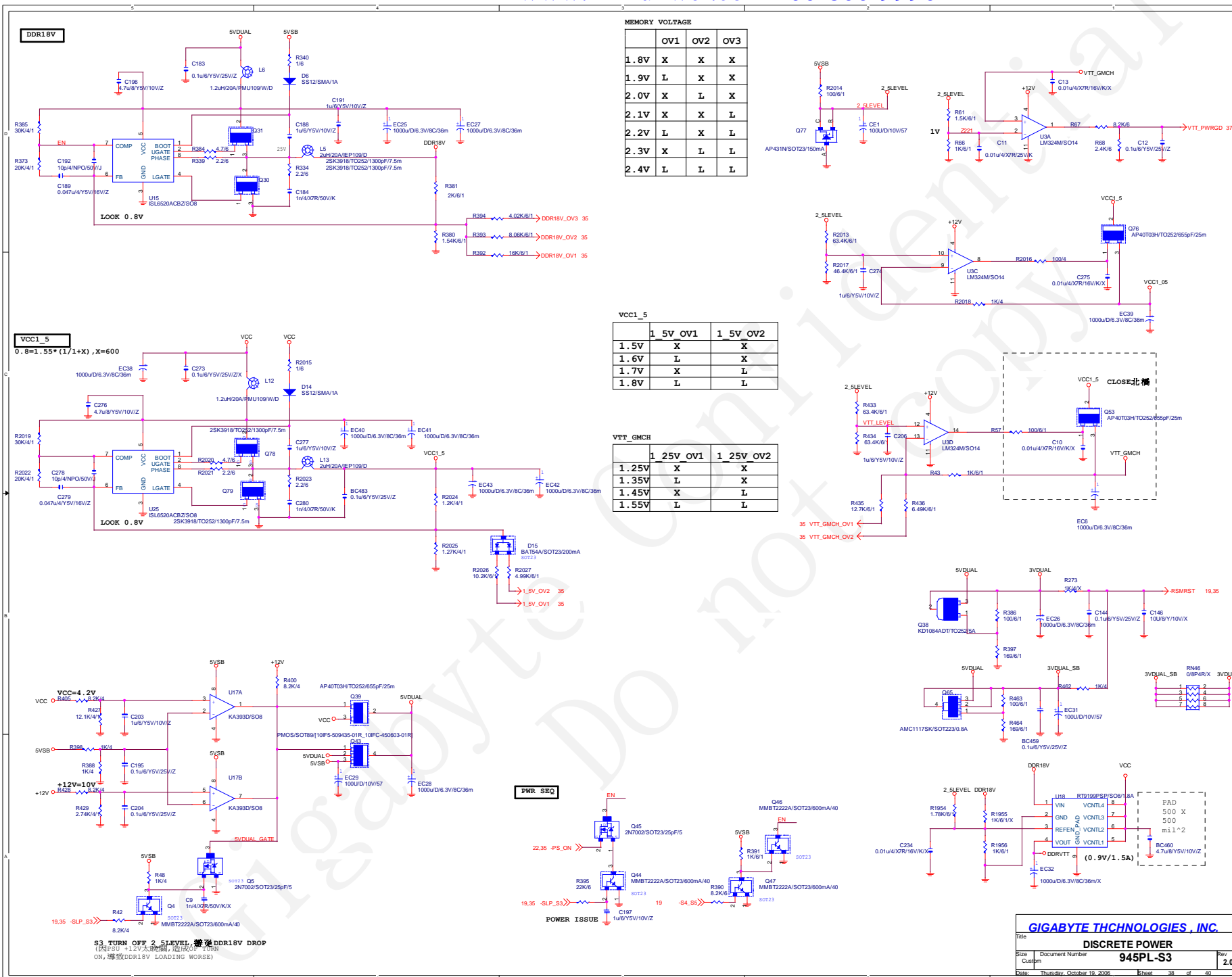


PLACE NEAR VGA_COM CONNECTOR



GIGABYTE THCNOLOGIES, INC.			
Title			
COM & LPT PORT			
Size	Document Number	Rev	
B	945PL-S3	2.0	
Date:	Thursday, October 19, 2006	Sheet	36 of 40





GPI26

INTEL ICH7 GPIO Implementation

紅字表示CPI/O 同PIN

GPI PIN

Pin Name	Pin Type	Power Well		GPIO Application
GPIO[0]	IIO	VCC3	GPIOBM_BUSY# (NA)	(NA)
GPIO[1]	IIO	VCC	-REQ[5] (P.U VCC)	-REQ[5]
GPIO[5:2]	IIO	VCC	-PIRQ[H:E] (P.U VCC)	-PIRQ[H:E]
GPIO[6]	IIO	VCC3	GPI (NA)	M_ID0 FOR MEDIA
GPIO[7]	IIO	VCC3	GPI (NA)	DUALBIOS_INPUT
GPIO[8]	IIO	3VDUAL	GPI (P.U 3VDUAL)	-SKTOCC
GPIO[9]	IIO	3VDUAL	GPI (NA)	P66DET
GPIO[10]	IIO	3VDUAL	GPI (NA)	M_ID1 FOR MB_ID
GPIO[11]	IIO	3VDUAL	-SMBALERT (P.U 3VDUAL)	-SMBALRT
GPIO[12]	IIO	3VDUAL	GPI (NA)	M_ID2 FOR MB_ID
GPIO[13]	IIO	3VDUAL	GPI (P.U 3VDUAL)	-LPCPME
GPIO[14]	IIO	3VDUAL	GPI (NA)	M_ID3 FOR MB_ID
GPIO[15]	IIO	3VDUAL	GPI (NA)	-ACZ_DET
GPIO[16]	IIO	VCC3	GPO P.D 20K(INT.)	HW RESET
GPIO[17]	IIO	VCC3	GPOI-GNT[5] (NA)	GPOI-GNT[5]
GPIO[18]	IIO	VCC3	GPOItoggle (NA)	(NA)
GPIO[19]	IIO	VCC3	SATA1GP (P.U VCC3)	SATA1GP
GPIO[20]	IIO	VCC3	GPO (P.U VCC3)	TBL-
GPIO[21]	IIO	VCC3	SATA0GP (P.U VCC3)	SATA0GP
GPIO[22]	IIO	VCC3	-REQ[4] (P.U VCC)	-REQ[4]
GPIO[23]	IIO	VCC3	LDRQ1# (NA)	(NA)
GPIO[24]	IIO	3VDUAL	GPOIreset not cleared (NA)	(NA)
GPIO[25]	IIO	3VDUAL	GPO (NA)	PWD_LED
GPIO[26]	IIO	3VDUAL	EL_RSVD (P.D)	-SPI_WP
GPIO[27]	IIO	3VDUAL	EL_STATE0 (NA)	(NA)
GPIO[28]	IIO	3VDUAL	EL_STATE1 (NA)	(NA)
GPIO[29]	IIO	3VDUAL	OC5# (P.U VCC 分壓))	OC5#
GPIO[30]	IIO	3VDUAL	OC6# (P.U VCC 分壓))	OC6#
GPIO[31]	IIO	3VDUAL	OC7# (P.U VCC 分壓))	OC7#
GPIO[32]	IIO	VCC3	GPO (NA)	DUAL_BIOS
GPIO[33]	IIO	VCC3	GPO (NA)	DUAL_BIOS
GPIO[34]	IIO	VCC3	GPO (P.U VCC3)	FWP-
GPIO[35]	IIO	VCC3	SATACLKREQ# (NA)	(NA)
GPIO[36]	I	VCC3	SATA2GP (P.U VCC3)	SATA2GP
GPIO[37]	I	VCC3	SATA3GP (P.U VCC3)	SATA3GP

GPO PIN

Pin Name	Pin Number	Power Well	Pin Type	GPIO Application
GPIO[38]	IIO	VCC3	GPI (NA)	(NA)
GPIO[39]	IIO	VCC3	GPI (NA)	(NA)
GPIO[40:47]			NOT IMPLEMENTED	NOT IMPLEMENTED
GPIO[48]	IIO	VCC3	-GNT[4] (NA)	-GNT[4]
GPIO[49]	IIO	VTT_GMCHCPUPWRGD (P.U VTT_OL)		GPUPWROK
PCI1	PCLK0	-PCIRST	-REQ0I-GNT0-PIRQE	A_D16
PCI2	PCLK1	-PCIRST	-REQ1I-GNT1-PIRQD	A_D17
PCI3	PCLK2	-PCIRST	-REQ2I-GNT2-PIRQC	A_D18
1394b	1394CLK	-PFMRST2	-REQ3I-GNT3-PIRQH	A_D23
IT8212	RAIDCLK	-PFMRST2	-REQ4I-GNT4-PIRQG	A_D22

GIGABYTE

GPIO TABLE		
Size	Document Number	Rev
Custom	945PL-S3	2.0
Date:	Thursday, October 19, 2006	Sheet 39 of 40

ICH7 GPIO Table:

NAME	PWR LANE	USAGE	NAME	PWR LANE	USAGE
GPI0	V5REF	M/B ID (-REQ6)	GPI41	VCC3	M/B ID
GPI1	V5REF	-REQ5	GPO48	VCC3	-GNT4
GPI2	V5REF	-PIRQE	GPO49	V-CPUIO	CPUPWOK
GPI3	V5REF	-PIRQF			
GPI4	V5REF	-PIRQG			
GPI5	V5REF	-PIRQH			
GPI6	VCC3	-SLP_BTN			
GPI7	VCC3	DUAL BIOS			
GPI8	3VDAUL	-LANWAKE			
GPI9	3VDAUL	-USBOC4			
GPI10	3VDAUL	-USBOC5			
GPI11	3VDAUL	-SMBALT			
GPI12	VCC3	ATX_DET			
GPI13	3VDAUL	-LPCPME			
GPI14	3VDAUL	-USBOC6			
GPI15	3VDAUL	-USBOC7			
GPO16	VCC3	CPU OV1 (-GNT6)			
GPO17	VCC3	-GNT5			
GPO18	VCC3	CPU OV2			
GPO19	VCC3	DUAL BIOS			
GPO20	VCC3	BIOS T-BLOCK			
GPO21	VCC3	DUAL BIOS			
GPO23	VCC3	DDR OV0			
GPI024	3VDAUL	GREEN LED			
GPI025	3VDAUL	DDR OV1			
GPI26	VCC3	SATA_GP0			
GPI027	3VDAUL	+PWRLED			
GPI028	3VDAUL	-PWRLED			
GPI29	VCC3	SATA GP1			
GPI30	VCC3	SATA GP2			
GPI31	VCC3	SATA GP3			
GPI032	VCC3	BIOS WP			
GPI033	VCC3	AZALIA DET			
GPI034	VCC3	PWRLED			
GPI40	V5REF	-REQ4			

PWROK/RESET Table:

ITE8712BHX PIN	NET NAME	TARGET
PIN62/-PCIRST1	-PCIE_RST	1. PCI-E * 1 Slot1 2. PCI-E * 1 Slot2 3. PCI-E * 1 Slot3 4. PCI-E * 16 Slot
PIN64/-PCIRST2	-PFMRST2	1. Onboard PCI Lan 2. Onboard 1394 Chip 3. OnBoard FWH
PIN65/-PCIRST3	-PFMRST1	1. Onboard PCI-E Lan 2. Onboard SATA Chip 3. GMCH
PIN115/-PCIRST4	-PFMRST -IDERST	Reserved For IDE
PIN63/PWROK1	PWROK1	1. GMCH 2. ICH6 3. 5VDUAL SWITCH 4. DPS CONTROL
PIN109/PWROK2	-THERM	1. ICH6

GIGABYTE THCHNOLOGIES , INC.

Title			GPIO/RESET TABLE	
Size	Document Number	945PL-S3		Rev
Custom				2.0
Date:	Thursday, October 19, 2006	Sheet	40	of 40